

PATRIOT® CRYSTAL MAINTENANCE MANAGEMENT



PATRIOT® CRYSTAL MAINTENANCE MANAGEMENT SYSTEM – compact version for more than small businesses

CRYSTAL is a compact compilation of the PATRIOT 3.0 Maintenance Management Information System that delivers the highest price-performance ratio between the functionality provided and the purchase cost. This version is designed for smaller companies or customers who are new to maintenance management. However, CRYSTAL can also be used by larger enterprises as a basic version, pilot project or cost-effective solution. CRYSTAL is designed to enable an easy and seamless transition to the standard version of the PATRIOT 3.0 Maintenance Management Information System without the need to migrate and rewrite data.

Maintenance management and organization

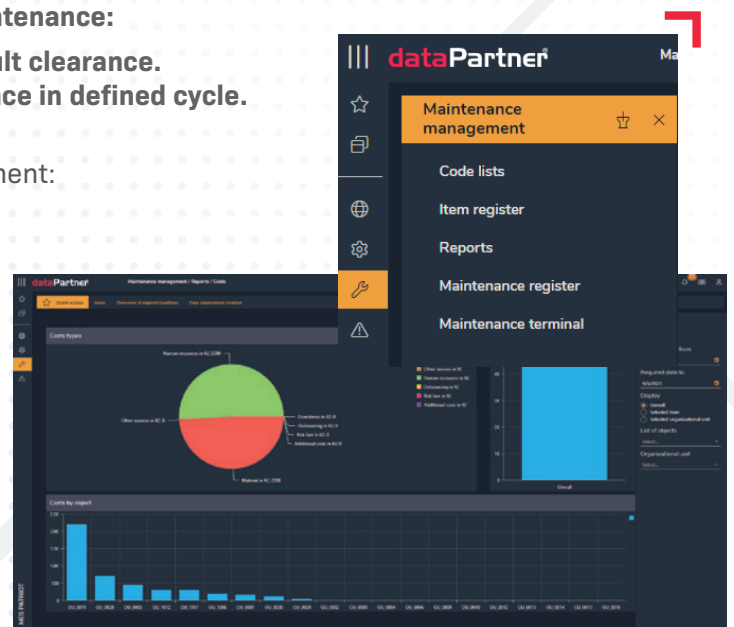
The CRYSTAL maintenance management system is a stand-alone module that works on a server-client basis with an unlimited number of users. CRYSTAL enables maintenance management of production and non-production assets, technological units, individual machines and production equipment down to individual parts and gauges; it also handles the maintenance of buildings and their parts. Each maintenance object is comprehensively recorded and described with emphasis on the criticality of the equipment. CRYSTAL provides efficient maintenance management of the monitored equipment or objects; easy availability of electronic documentation including records of failures causes and the measures taken. Maintenance requests are entered manually or can be automatically generated based on a preventive maintenance program.

CRYSTAL distinguishes the following **basic types of maintenance**:

- » **Corrective (post-fault)** ensures fast, effective fault clearance.
- » **Preventive (pre-fault)** through regular maintenance in defined cycle.

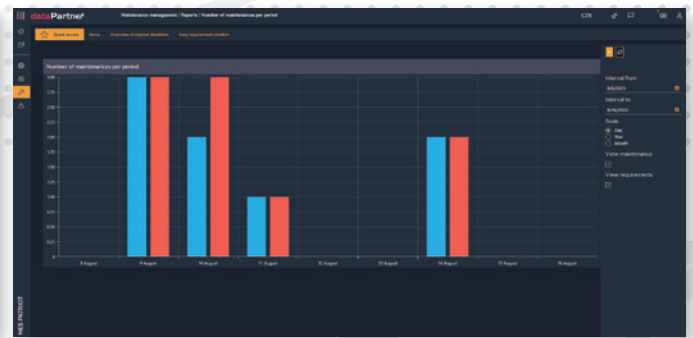
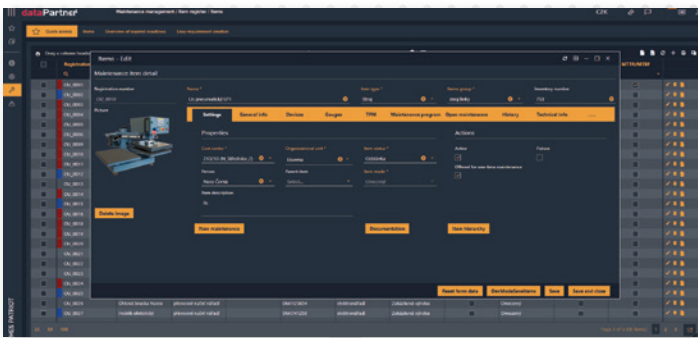
Basic functionalities of CRYSTAL maintenance management:

- » Objects of maintenance, documentation included
- » Maintenance requests
- » Maintenance (preventive and post-fault)
- » Work orders printing
- » Human resources (personnel and competence directory)
- » Missed deadlines
- » Reports
- » Code lists
- » User access
- » Data exports
- » Attachments (drawings, photos, videos, etc.)
- » Metrology/Gauges



Maintenance optimization

An important decision in maintenance planning is determining the appropriate time to renew the production equipment as a whole, determining its optimum useful lifespan. The criteria for this decision can be many: physical wear and tear, change of production programme, production expansion, and change of production technology, technological and economic obsolescence of the production equipment. CRYSTAL maintenance management system reports can reliably evaluate the current maintenance status from: multiple perspectives, the frequency of failures for individual equipment or production units based on the history of stored data. Extensive records of maintenance objects including electronic documentation, manuals, work procedures or records of repairs carried out on the object can be used to optimise maintenance. CRYSTAL also maintains the management of measuring instruments including tracking the validity of calibration.

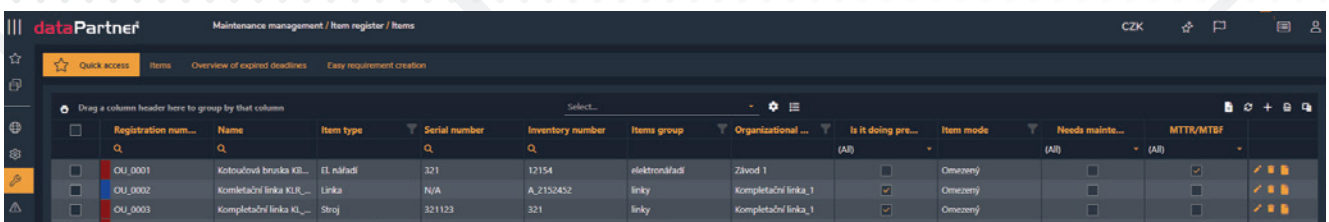


Installation of CRYSTAL

The implementation of the CRYSTAL maintenance management system is easy and intuitive. It can be carried out by IT department staff independently without the need for intervention and participation of dataPartner.

Switching from the CRYSTAL to the full PATRIOT version

By purchasing the CRYSTAL maintenance management system users get not only a compact system with many useful functionalities but also the option to switch to the standard PATRIOT version at any later date. This extends the maintenance management with additional advanced and useful functions. The price paid for the basic version of CRYSTAL is deducted from the cost when upgrading to the full maintenance version of PATRIOT 3.0. All the data acquired by the existing activities in the CRYSTAL version remains compatible so the transition to the full version of the maintenance management system is very easy.



Registration num...	Name	Item type	Serial number	Inventory number	Items group	Organizational ...	Is it doing pre...	Item mode	Needs mainte...	MTRR/MTBF
OU_0001	Kotoučová bruska KL...	El. nářadí	321	12154	elektrónářadí	Závod 1	<input type="checkbox"/>	Omezený	<input type="checkbox"/>	<input type="checkbox"/>
OU_0002	Kompletační linka KL...	Linka	N/A	A_2152452	linky	Kompletační linka_1	<input checked="" type="checkbox"/>	Omezený	<input type="checkbox"/>	<input type="checkbox"/>
OU_0003	Kompletační linka KL...	Stroj	321123	321	linky	Kompletační linka_1	<input checked="" type="checkbox"/>	Omezený	<input type="checkbox"/>	<input type="checkbox"/>

